

# IJCAD

Multi license Setup manual

【For users】





## Multi license setup manual [for users]

### table of contents

## 01

### Before installation

- 01-01 Procedure for introducing IJCAD ..... 004
- 01-02 Recommended operating environment ..... 004
- 01-03 Precautions ..... 005

## 02

### Create an IJ account

- 02-01 IJ account registration/login ..... 006

## 03

### How to use license

- 03-01 Belong to the licensing team ..... 008

## 04

### Installing IJCAD

- 04-01 Downloading IJCAD ..... 009
- 04-02 Installing IJCAD ..... 011

## 05

### Starting IJCAD

- 05-01 Login and activation ..... 015

**06**

**Leave the licensing team**

06-01 Leave the licensing team ..... 017

**07**

**Update Installation**

07-01 Before Update Installation ..... 018

07-01 Update Installation procedure ..... 018

**08**

**Uninstalling IJCAD**

08-01 Uninstalling IJCAD ..... 020

\*\*\*

**Revision History**

February 02, 2026 First edition of multi license setup manual issued

March 02, 2026 Second edition of multi license setup manual issued

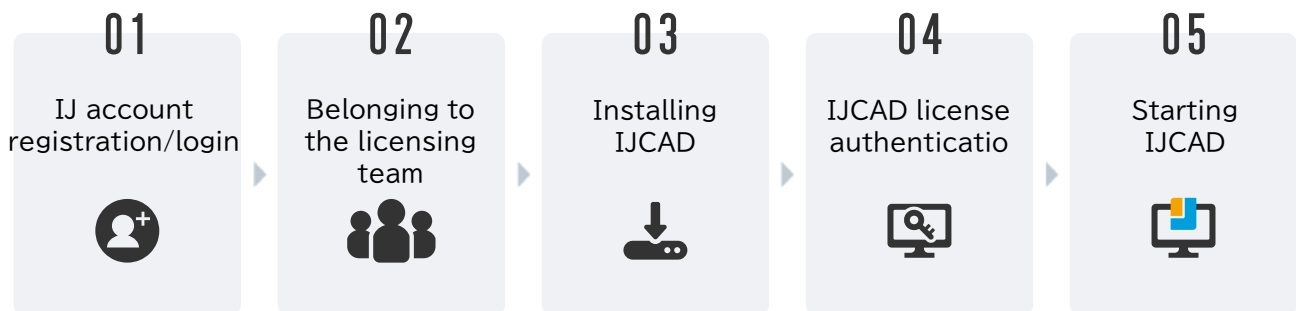
April 01, 2026 Third edition of multi license setup manual issued

## 01

## Before installation

This manual is for those who manage how to use IJCAD, such as allocating licenses, viewing users, and creating groups.

## 01-01 Procedure for introducing IJCAD



## 01-02 Recommended operating environment

The following operating environment is necessary for this product.  
Please note that the operating environment is subject to change without notice.  
Please check the IJCAD help center  
(<https://support.ijcad.jp/hc/ja>) for the latest information.

CPU	Minimum Core i 5 More than Core i 7 (recommended)
RAM	Minimum 8GB More than 16GB (recommended)
HDD(SSD)	PF:More than 1.82GB Civil:More than 1.37GB Mechanical:More than 2.01GB Electrical:More than 850MB Arch/ Arch+:More than 1.0GB

PC/OS	Windows 11 (24H2)
Display card	2GB GPU (recommended)
OPTION	.NET Framework 8(※)
	[Only when using VBA] Microsoft Visual C++ 2010 Redistributable Package(※)

※ About .NET 8

If .NET 8 is not installed on your PC,  
it will be installed along with the installation of IJCAD 2026.

※ About Microsoft Visual C++ 2010 Redistributable Package

If "Microsoft Visual C++ 2010 x64 Redistributable" is not installed on your  
computer, please install it by yourself from the Microsoft website.

## 01-03 Precautions

- During installation, an application called "B-rite Runtime 3" will also be installed. B-rite Runtime 3 is an application required to run the product, so please do not delete it.



- The icon is different for each product

▼PF



▼Civil



▼Mechanical/Mechanical+



▼Electrical



▼Arch/Arch+



## 02

## Create an IJ account

## 02-01 IJ account registration/login

If you already have an account on one of the sites below, you do not need to register for a new IJ account. You can log in to your IJ account using your existing account.

- IJCAD.jp(<https://www.ijcad.jp/>)
- CAD data conversion service [DARE](<https://www.caddare.com/>)

## 1. Access IJStore

Access IJStore (<https://manage.ijcad.jp/>) to register and log in to your IJ account.

The image shows two side-by-side screenshots of the IJ account management interface. The left one is the login page (ログイン) and the right one is the new registration page (新規登録). Both pages feature Google and Microsoft login options, an email address field (pre-filled with 'hello@ijcad.jp'), and a password field. The login page has a 'ログイン' button, and the registration page has a '新規登録' button.

## 2. New registration

Enter your email address and password, and click the [新規登録] button.

The image shows a screenshot of the IJCAD website's account management page. The '新規登録' (New Registration) form is highlighted with a red box. The form includes fields for email address and password, and a '新規登録' button. The 'ログイン' (Login) form is also visible on the left.

### 3. Confirm registered email address

An email titled 「【IJCAD】仮登録完了のお知らせ」 will be sent to the registered address.  
Please click the link in the email.

【IJCAD】仮登録完了のお知らせ 受信トレイ

\*\*\*\*\*

\*\*\*\*\* 様

この度はIJ Storeへご登録をいただき、ありがとうございます。

作成されたアカウントは仮登録の状態のため、  
下記URLをクリックして、本登録を行ってください。

\*\*\*\*\*

こちらのメールにお心当たりのない場合は、URLをクリックせず、本メールを破棄していただきますようお願いいたします。

-----  
本メールアドレスは送信専用のため、返信は受け付けておりません。  
ご不明な点などがございましたら下記までお問い合わせください。

◆システムメトリックス株式会社  
〒460-0002 名古屋市中区丸の内1-15-20 (e丸の内ビルディング 11F)

・IJCADアカウント : <https://account.ijcad.jp/>  
・お問い合わせ : <https://support.ijcad.jp/hc/ja/requests/new>

-----

### 4. Registration

The registration is complete when 「メールアドレスは確認済みです」 pop-up appears.

[ホーム](#) / [ユーザーの本登録](#)

## ユーザーの本登録

✔ ユーザーの本登録を完了しました。

[ホームへ](#)

[ログイン](#)

When you click the [ログイン] button, the screen will change.  
enter the email address and password you registered.

### 5. IJStore (<https://manage.ijcad.jp/>) will be available.

## 03

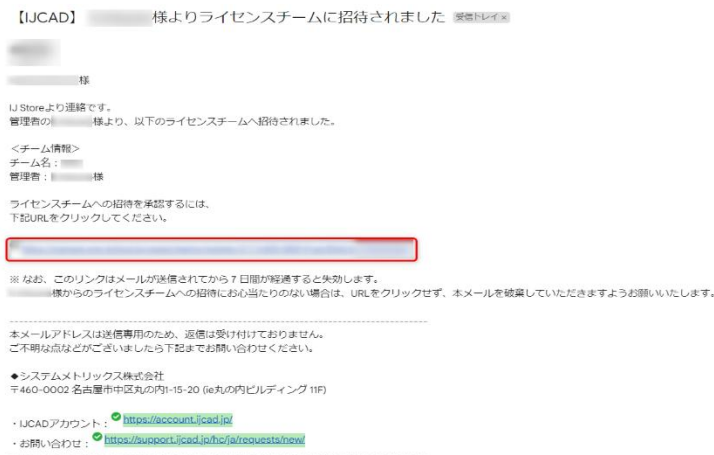
## How to use license

## 03-01 Belong to the licensing team

## 1. Approve an invitation to the licensing team

An internal buyer or management company will invite you to join the team.

If you receive an email saying "【IJCAD】〇〇様よりライセンスチームに招待されました," please click the link in the email.



## 2. Completion of approval

On the 「チームの承認」 page, click the [承認する] button.

## チームの承認

① 〇〇様 チームに招待されています。

オーナー名： 〇〇様  
メールアドレス： 〇〇@〇〇.com

[承認する](#)

This completes your membership in the license team you were invited to and allows you to use the licenses held by the team.

\*You cannot belong to another license team while renting your license.

Please be sure to return your license before accepting the invitation.

Please check the [Multi-license Operation Manual] for details on the lending function.

## 04

## Installing IJCAD

## 04-01 Downloading IJCAD

## ◆ Download from downloadable software page

1. Log in to IJStore (<https://manage.ijcad.jp/>)  
Log in with your registered email address and password.
2. Open the download page  
Click [ライセンスの利用] > [ダウンロード可能ソフト] in the side menu.



## Download the installer

Click the icon in the download column to download the product installer.

## 📁 ダウンロード可能ソフト

シングル・グループ化済みマルチライセンスは、割り当てを実施したのちに起動が可能です。

キーワードで検索

全 1 件

< 1 >

アプリ名	最新バージョン	ダウンロード
IJCAD PRO	(Build )	

\*Licenses will not be displayed unless you are a member of the license team.

\*If there is multiple software available for download and you are not sure which one to download, please contact your company's administrator.

## ◆ Download from Product Downloads page

1. Log in to IJStore (<https://manage.ijcad.jp/>)  
Log in with your registered email address and password.
2. Open the product download page  
Click [ライセンス管理] > [製品ダウンロード] in the side menu.



3. Download the installer  
Click[ダウンロード] to download the product installer.

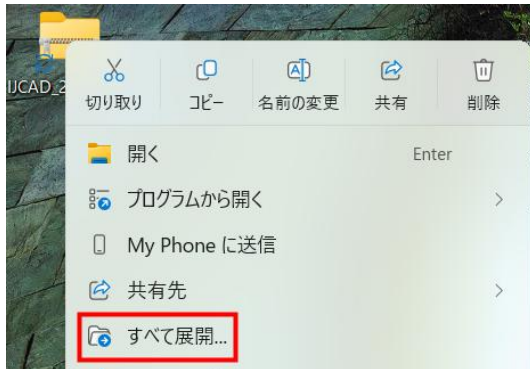


## 04-02 Installing IJCAD

### 1. Decompress the installer (unzip)

Right-click the downloaded IJCAD installer and click [すべて展開].

The installer is a compressed file. Please be sure to decompress it.

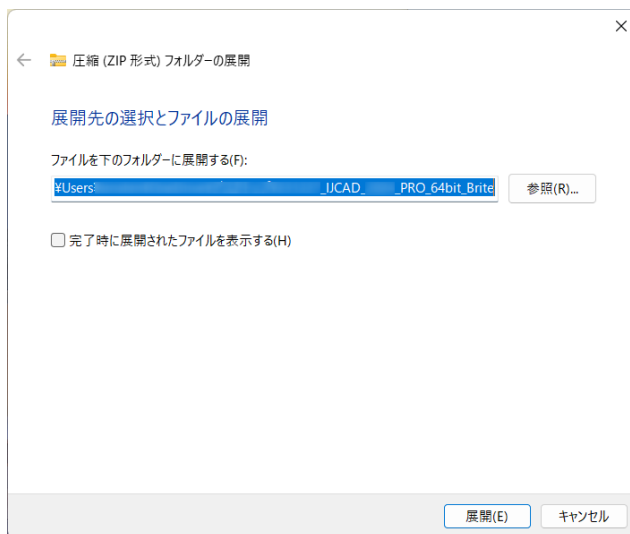


### 2. Select decompression destination

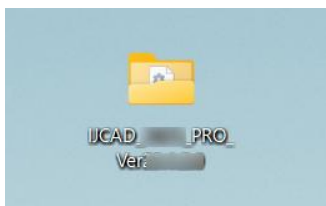
The「展開先の選択とファイルの展開」 dialog is displayed.

There is no need to change the deployment destination.

Just click the [展開] button.

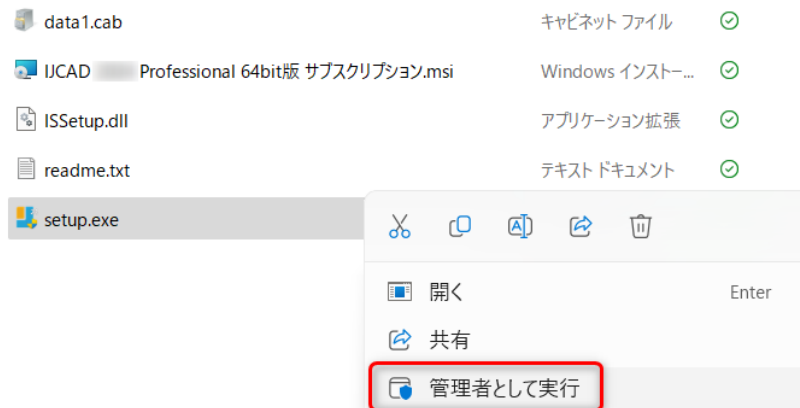


Once the decompression is complete, a folder will be created based on the installer name.



### 3. Execute [setup.exe]

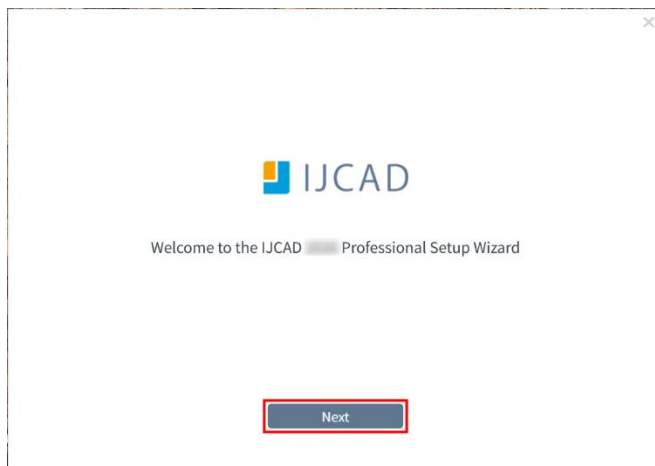
Open the decompress file and right click [setup.exe].  
Find and click [管理者として実行].



「ユーザーアカウント制御」 dialog may appear. Click 「はい」 to start the installer.

### 4. Launch the installer

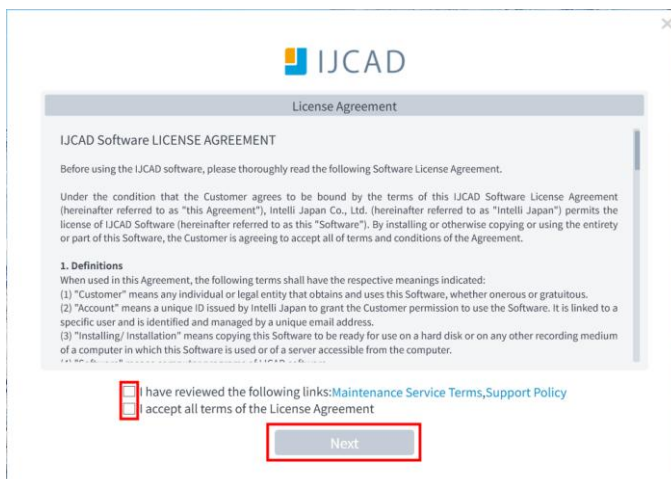
When the installer starts, click [Next].



### 5. Confirm the license agreement

Please read the IJCAD Software License Agreement, Maintenance Service Terms, and Support Policy (links).

If you agree, check the two checkboxes and click [Next].



## 6. Select installation destination

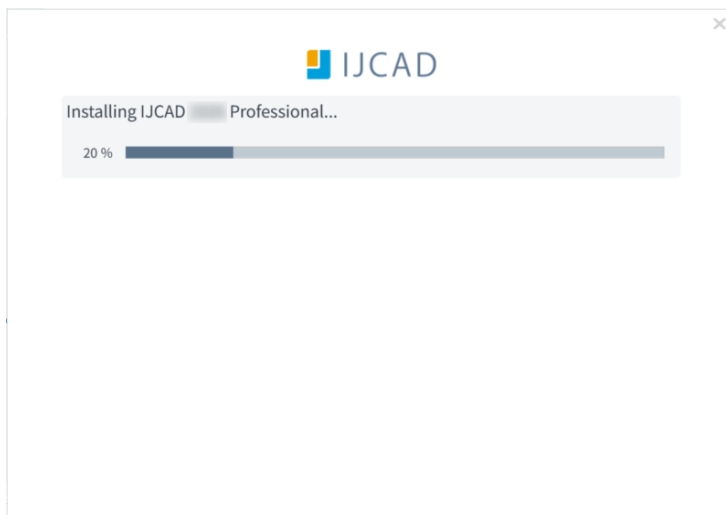
Just click the [Next] button.

You can also select the installation destination folder from [...].



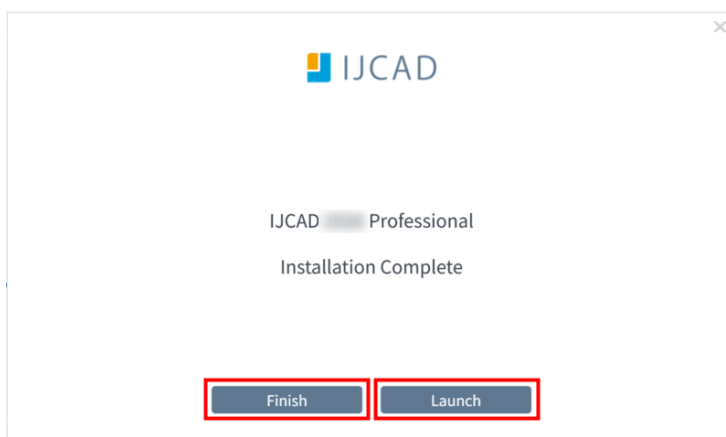
## 7. Installation

Installation will begin.



## 8. Installation completed

Click [Finish] to exit, and click [Launch] to start IJCAD.



Once the installation is complete,an IJCAD icon will be added to the desktop or start menu.



\*At the same time, "B-rite Runtime 3", an application to authenticate the IJCAD license, will be added.

This application is required for license authentication, so please do not delete it.



## 05 Starting IJCAD

### 05-01 Login and activation

#### 1. Starting IJCAD for the first time

Double-click the IJCAD icon on the desktop to start IJCAD.



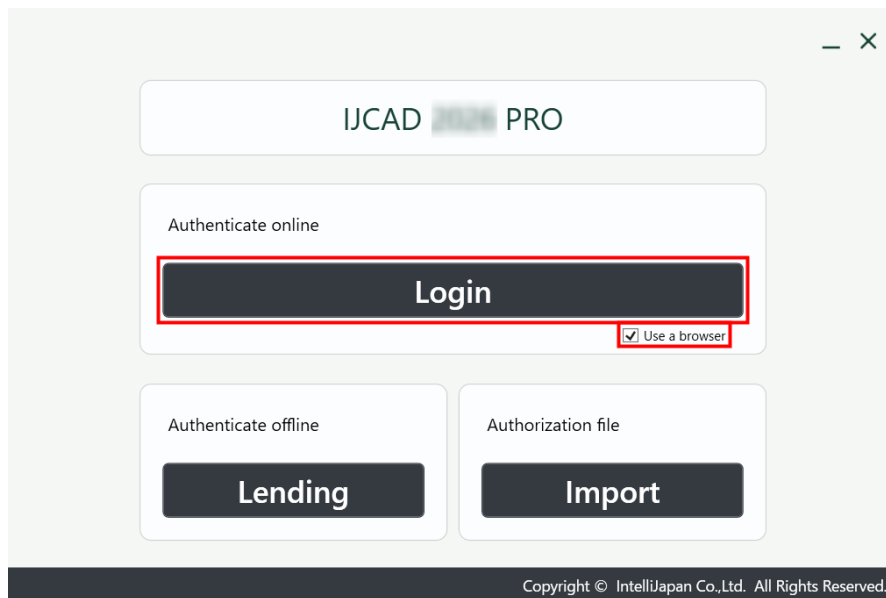
While the software is primarily intended to be used by the same user who installed it, please refer to the following article if you must use it with a different account.

[インストールユーザーと異なるユーザーで利用する場合の注意点](#)

#### 2. Preparation for login

When you start IJCAD, an authentication screen will be displayed first.

Click the [ログイン] button to display the login screen.

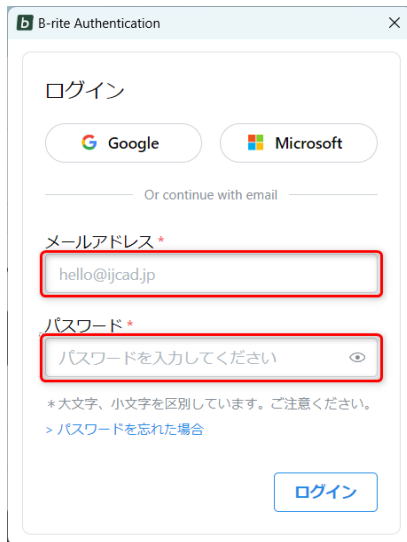


\* By checking "☑ Use a browser",  
you will log in via the browser you normally use.

#### 3. Log in to your IJ account

You need to log in to your IJ account.

After entering the registered email address and password, click the [ログイン] button.



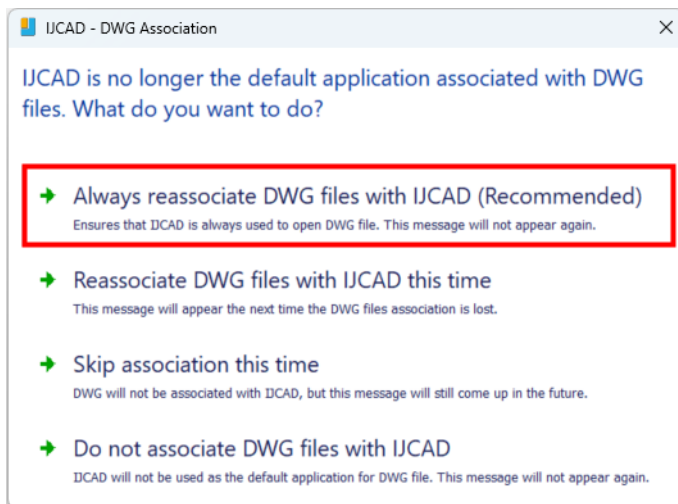
When license authentication is completed using the logged-in account, IJCAD will start.

#### 4. Set file associations

When you start it for the first time, the following setting screen for association with DWG will be displayed. Select as required.

If you select 「Always reassociate DWG with IJCAD(Recommended)」in the first line, DWG will always be associated with IJCAD.

From now on, double-clicking the DWG file will open IJCAD.



#### 5. Start IJCAD

IJCAD startup has completed.

## 06

## Leave the licensing team

## 06-01 Leave the licensing team

If you are no longer part of the licensing team you belong to due to a change in department, etc., you can leave the licensing team.

## 1. Open user team management

Click [ライセンスの管理] > [利用チームの管理] in the side menu.



## 2. Leave the licensing team

The license team you currently belong to is displayed above, so if you wish to leave, please click the [退出する] button.



## 07

## Update Installation

When you want to update version of the installed product, update installation is necessary.

※Update installation is not required when installing IJCAD 2024 SP0.

Update installation differs from version up and means to update within the same fiscal year version.

Example:

Update installation: IJCAD 2026 SP0 → IJCAD 2026 SP1

Version up: IJCAD 2025 SP1 → IJCAD 2026 SP0

## 07-01 Before Update Installation

Although the information of CUI and template customization could be inherited without transit operation, first take your backup before update installation for your safety.

- Cuix file, etc.  
⇒C:¥Users¥(User Name)¥AppData¥Roaming¥IntelliJapan  
¥IJCAD(Grade)¥R26¥en-US¥Support
- Template File  
⇒C:¥Users¥(User Name)¥AppData¥Local¥IntelliJapan  
¥IJCAD(Grade)¥R26¥en-US¥Template

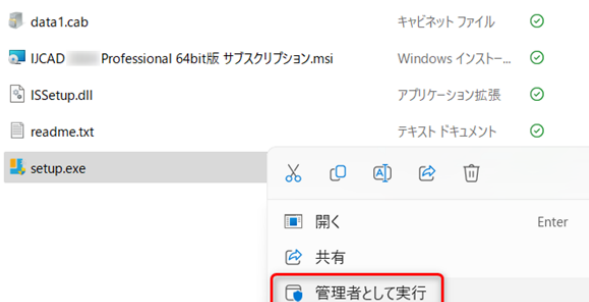
## 07-02 Update Installation procedure

## 1. Download the latest Installer

The latest version can be downloaded from the WEB page  
(<https://manage.ijcad.jp/trials/downloads>)

## 2. Launch the Installer

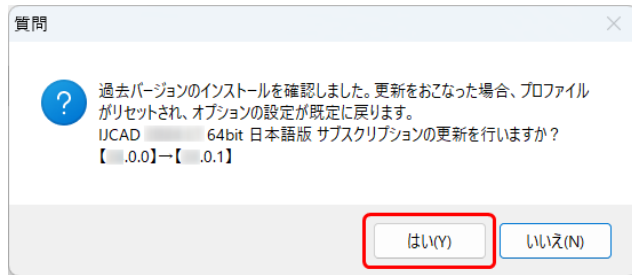
Please Unzip the downloaded folder, right-click on [setup.exe] in the folder, and run it as an administrator. The installer will start.



### 3. Update Installation

After launching the installer, a dialog like the right picture appears.

Click [はい] button



### 4. Installation

The installation will begin, so please wait until it is complete.

The update installation is now complete.

\*If the update installation does not go well, please uninstall IJCAD once and then perform a new installation.

## 08

## Uninstalling IJCAD

## 08-01 Uninstalling IJCAD

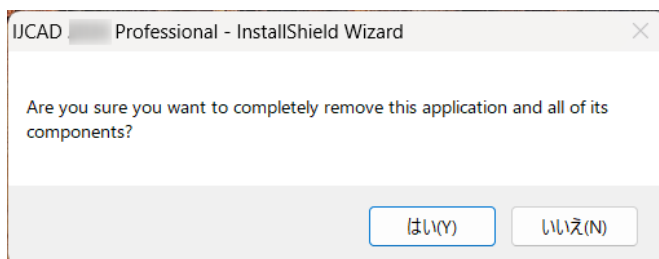
Uninstallation is possible in two ways from [アプリと機能] and from [コントロールパネル].

◆ Uninstall procedure from [アプリと機能]

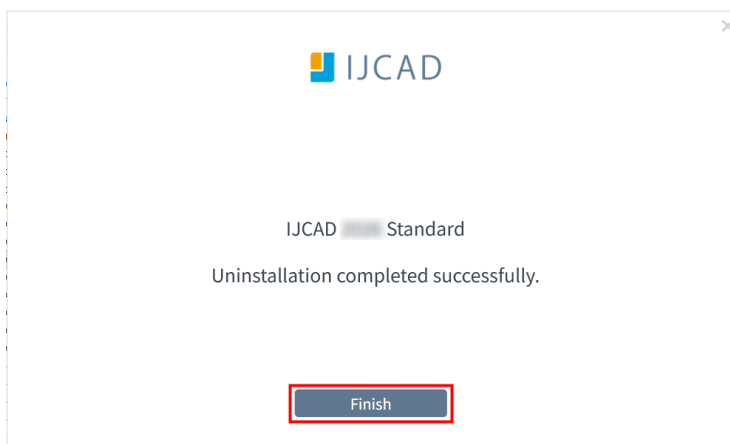
- Go to the uninstallation screen  
Right-click the Windows Start menu,  
click [Settings] > [Apps] > [Installed Apps],  
then follow the steps below to open the uninstall menu.



- Uninstall  
The installer will start, and a confirmation message will be displayed, so click the [はい] button.



- Completion of uninstallation  
When the completion dialog appears, click the [Finish] button.



#### 4. Delete user data

After uninstalling, please delete your user data.

C:\¥Users¥[username]¥AppData¥Roaming¥IntelliJapan  
¥IJCAD [product name or grade] ¥R26

### ◆ Uninstall procedure from [コントロールパネル]

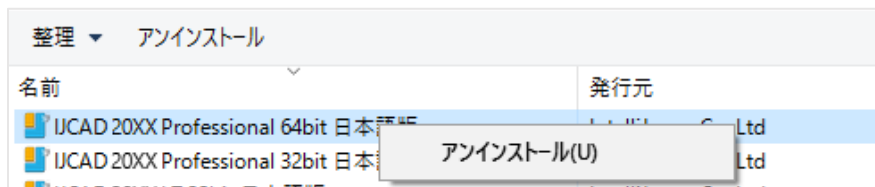
#### 1. Go to the uninstallation screen

Open Control Panel and select [プログラムのアンインストール].

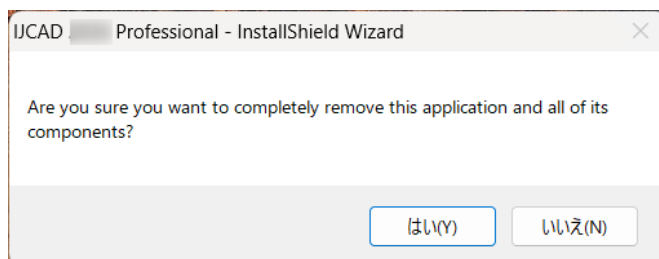


#### 2. Uninstall

Select the IJCAD you want to uninstall from the list, right-click the mouse, and click [アンインストール] from the menu.

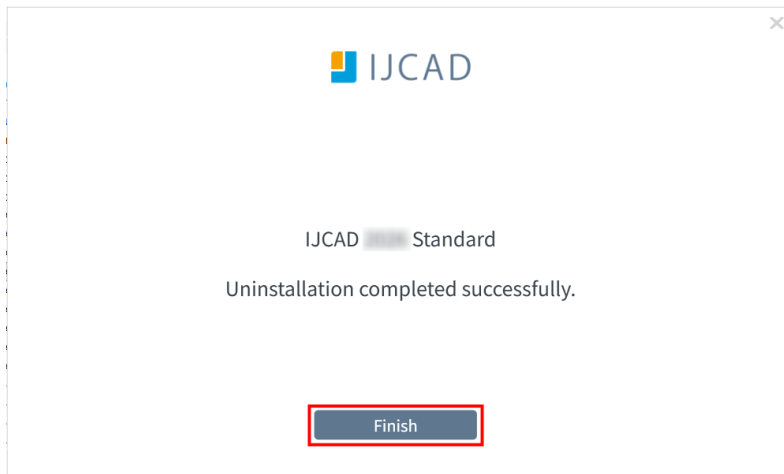


The installer will start, and a confirmation message will be displayed, so click the [はい] button.



#### 3. Completion of uninstallation

When the completion dialog appears, click the [Finish] button.



#### 4. Delete user data

After uninstalling, please delete your user data.

C:\Users\ [username] \AppData\Roaming\IntelliJapan  
 \IJCAD [product name or grade] \R26

\*If you do not use IJCAD, please uninstall B-rite Runtime 3 at the same time.  
The procedure is the same as uninstalling IJCAD, and you can uninstall from  
[アプリと機能] and [コントロールパネル].

There is no need to delete user data.